

# COMPANY PROFILE

**cpm**

CONSTRUCTION & PROJECT  
MANAGEMENT SERVICES

ISO CERTIFIED  
**TÜV**  
AUSTRIA  
ISO 9001:2015  
ISO 14001:2015  
ISO 18001:2007





## ***Top Message***

Greetings and welcome to Construction and Project Management Services (CPM), we are thankful to Allah Almighty for giving us the ability and power to utilize and manage our resources in the best possible way which is mutually beneficial for our Projects and society.

CPM has a history of responsible business conduct. We strongly believe that real business success is not just about profits measured in numbers but also, as importantly about how those numbers are achieved. Our corporate strategy reflects our commitment to sustainable business practices and balancing responsibility alongside growth and productivity.

A vital aspect of our business is HSE. We implement rigorous & on-going HSE trainings and consistently take measures to evaluate our HSE procedures. No element of our business is greater than that of HSE for our employees, subcontractors and the client.

I would like to take this opportunity to pledge that I & CPM team will endeavor to devote our full efforts to exceed our customer's expectations and fully satisfy their needs and requirements.

Thank You

A handwritten signature in blue ink, appearing to read 'Wajahat' followed by a stylized flourish.

**WAJAHAT QAMAR**  
CHIEF EXECUTIVE OFFICER

## CONTENT LIST

1	• Introduction
2	• Mission Statement
3	• Services
4	• Quality & HSE Policy
5	• Comapny Structure
6	• Prestigious Clients
7	• Civil Major Projects
8	• Rehabilitation Work Projects
9	• Grid Station ETC Projects
10	• Electrical Major Projects
11	• Under Ground Cable Projects
12	• Civil Work Equipments
13	• Survey Equipments
14	• Erection Equipments
15	• Grid Station & ETC Work Equipments
16	• Stringing Equipments
17	• Under GroundCable Works Equipment
18	• Certificates & Achievements
19	• Financial Strength and Yearly Turnover



## Introduction

Construction & Project Management Services (CPM) is bona fide occupational qualified contractor and working in Civil and Electrical competence Technology since 1997, during this extensive time period we have concluded several projects concerning or related to;



- Design, Construction, Supply, Installation, Testing & Commissioning of MV/HV/EHV Electrical Substations and Transmission Lines.
- Construction of Multi Story Buildings, Colonies, Hospitals, Bridges, Culverts, Roads.
- Finishing and Rehabilitation Works.
- Construction of Grid Station & Power Houses.
- External Electrification including PMT & Underground Cabling of Major Colonies.

We have qualified staff, honest and efficient teams of technical and non-technical workers permanently associated with us to work under severe conditions and are turned to stick with the designated time period, and we are also having a kit of tools and plants that are related and essential for the jobs performed.

Now we are working with reputable organizations; like M/s K-Electric, M/s SPTD, M/s NTDC, M/s HESCO, M/s STDC, M/s FWO, M/s CWO, M/s NEIE, M/s LS Cable Limited, M/s Alstom and M/s SDEPCI.

We have experienced; Civil, Electrical and Mechanical professional working since 15 years all over Pakistan. Kindly in view of the above we are confident that your good self will consider enlistment/ prequalification of our firm enabling us to participate for competitive bids and in the growth of his organization.

CPM is registered with following:

- Pakistan Engineering Council – No. 313 (CB)
- Electrical Contractor License (Govt. of Sindh)
- CPM National Tax Number is 3095030
- ISO Certified (TUV AUSTRIA)
  - ISO 9001:2015
  - ISO 14001:2015
  - ISO 45001:2018





## ***Our Vision***

Our Vision is to focus on environment activities to benefits society. We are committed to achieving business and financial success while leaving a positive imprint on society.

## ***Our Mission***

Our mission is to be the Pakistan's leading civil and electrical contracting company focused on customer satisfaction. We seek to produce increased financial rewards and provide opportunities for growth and enrichment to employees, striving for honesty, reliability and integrity within the company.

## ***Our Values***

Our values guide the way we work with our business partners, within our communities and with each other. Through our values, we have created a company culture where ideas can blossom, people can thrive and success can flourish.



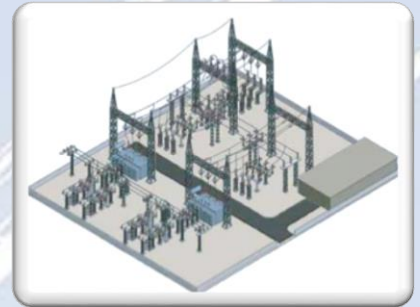
# Mission Statement



## Services

We are able to cover a complete range of services of all types of industrial and commercial projects. Our full ranges of services of are listed below:

- Construction of 132kV, 220kV and 500kV Overhead Transmission Lines and 132kV & 220kV Underground Transmission Lines on EPC;
- Construction of Multi Story Buildings, Colonies, Hospitals, Shopping Malls, Bridges, Culverts and Roads.



- Design, Engineering, Transportation, Civil, Erection, Installation, Testing and Commissioning of 132kV, 220kV Grid Station and Substations.
- Construction of Telecommunication Towers on C.M.E basis.
- Laying of Power and Telecommunication Cables (OMT) Supply & Installation of Electrification Scheme for Towns & Villages.



## ***Construction of 100 Beds Hospital at Dera Ghazi Khan***





### **Survey Work**

- CPM has developed a dedicated survey team to carry out various survey works in various sites.
- CPM owns every kind of required equipment with updated calibration to carry out Topographic Survey work.
- CPM has carried out Topographic Survey works on their own in several projects. CPM provide standard survey report by using AUTODESK Analyst software.
- CPM provides As-built Drawing after completion of any project construction work.



### **Civil Construction Works**

Though Completed a several Number of Jobs in Civil, CPM has invested to buy machineries and equipment for civil works. CPM is able to provide;

- Soil Investigation Work
- Building / Houses Construction, Master Planning / Infrastructure & Electrification work.
- Material Test, Slump Test and Compressive Strength Test of Concrete
- Complete Civil Design of Grid Stations, Substations & Transmission Lines Construction procedure and construction micro- schedule making.



### **Installation of Grid Stations & Substation**

- Installation of Power Transformers, GIS, AIS, Panels Etc.
- Installation Of Steel Structure With On Site Fabrication
- Cable Laying
- Cable Tray Installation and Fabrication
- Grounding System Installation

### **Testing & Commissioning**

With A Huge Number of Testing Equipment and Experts, CPM is fully capable to Test and Commission up to 500kV without Any Other Expert support. CPM provides;

- Ratio, Polarity, Tan-Delta, Insulation Resistance, Winding Resistance, Polarity, Capacitance, Knee Point Voltage, Magnetic Balance Test
- Breaker Timing and Analyzing
- Transformer Oil Test
- Protection Relays Test





CPM started civil construction after a handful success in various projects after first two years. CPM now holds possession a few equipment for different constructions and offers any kind of constructions affiliated with Transmission Line construction, Substation construction, Power Plant construction, etc. Moreover, CPM developed an in-house dedicated civil design team for these kinds of constructions. This design team has expertise in Geotechnical and Structural Design. CPM also offers any kind of consultancy regarding, Transmission Line construction and Substation construction.



### ***Geotechnical Investigation & Concrete Test***

- Sub-soil Investigation work which includes Standard Penetration Test, Field Density Test, Standard Proctor Test, Modified Proctor Test, Field Permeability Test etc.
- CPM offers in-situ testing only. Laboratory tests generally carried out from reputed third party agency. However, CPM has a plan to build an in-house Laboratory structure, very soon.
- For concrete slump test and strength test, CPM has an in-house facility along with a field testing team.

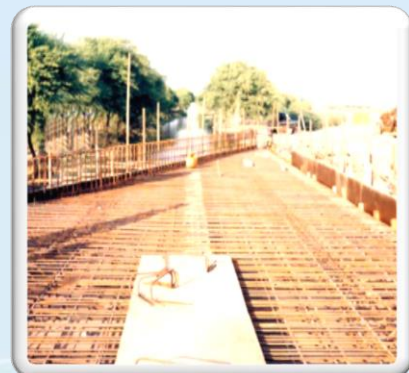
### ***Pile Construction & Pile Related Test***

- CPM offers Design and Construction for both Cast-in-situ & Pre-cast piling work.
- CPM offers Cast-in-situ piling using Rotary, Percussion Method & Pre-cast piling work.
- CPM offers Pile Integrity Test, Static Compressive Load Test, Static Tension Load Test & Lateral Load Test for both Cast-in-situ & Pre-cast piles.
- Pile Caps and Tie Beams.



### ***Major Construction Works***

- CPM successfully completed 132kV & 220kV Grid stations including Land Development Works
- CPM has expertise in Transmission Lines construction along with various Power Plant structure construction
- CPM willing to purchase an Automatic Batching Plant with Transit Mixture very shortly
- Construction of Heavy Machine Foundations and other infrastructures including construction of Roads, Boundary Walls and Commercial Buildings
- Construction of Bridges, Culverts and relevant structures.





## Quality & HSE Policy



*“Zero harm targets is our #1 priority for all people and environment”*



### Health, Safety & Environment

The safety of our workforce is the most important aspect of our business, no exception.

**CPM** aims to stay at the fore front of the industry and have adopted and developed HSE policies and management practices that sees the quality control of every task. Our Safety systems are in accordance with QMS/QA/QC/OSHA/ISO and they are instilled into our employees ensuring that our work is completed with zero harm as our #1 priority.

**CPM** is committed to ensuring that our operations are conducted with zero harm to all people and the environment and the quality of our products and services are upheld and consistently maintained.

#### *We empower our people to:*

- Intervene when they witness any ‘at-risk’ behavior
- Lead by example
- Identify and manage hazards associated with the activities for which they are responsible
- Courageously and honestly report all accidents and hazards
- Take the time to do things right; do the job safely or not at all – do not cut corners

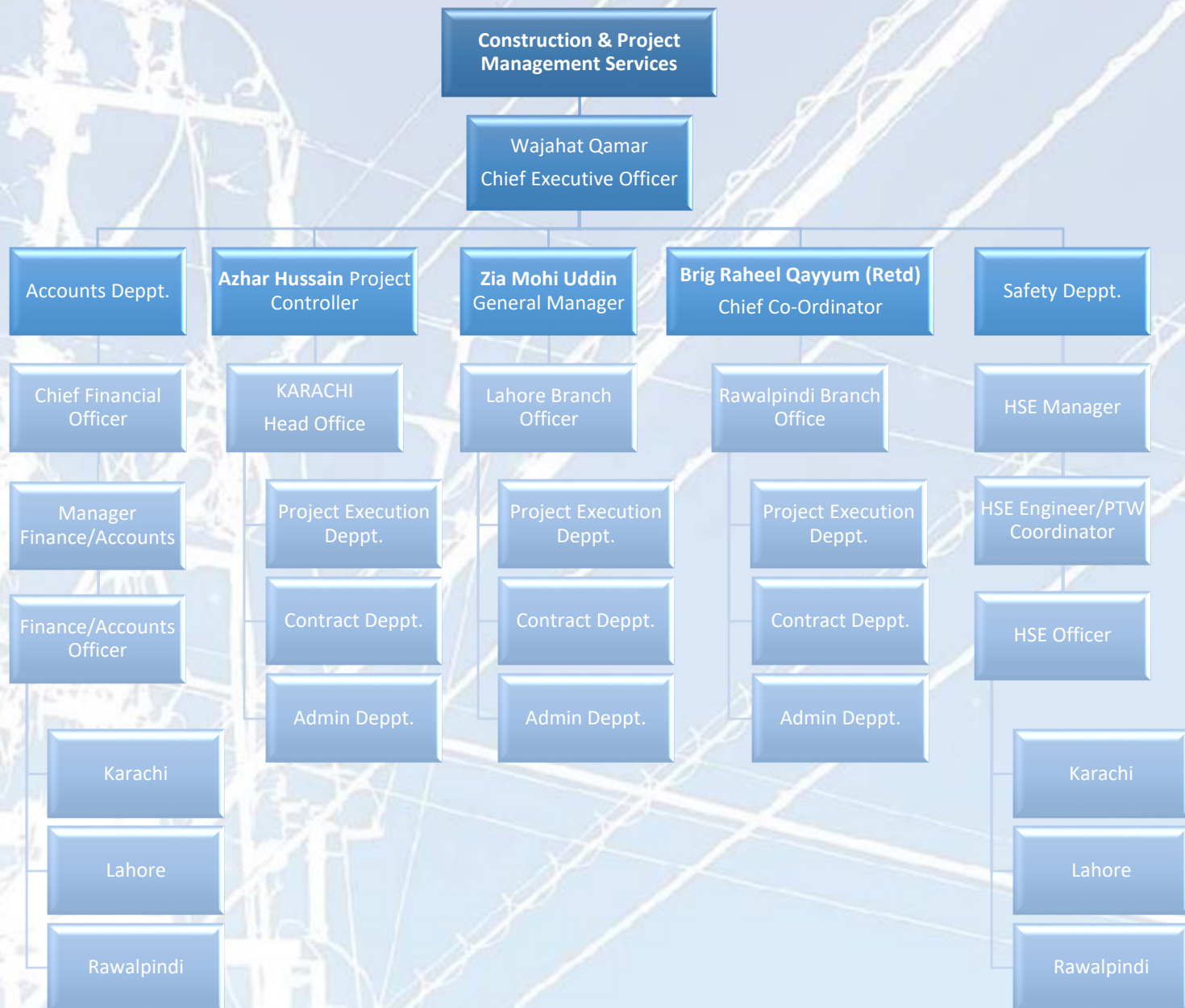
### Our HSE Culture

All of our themes have supporting behaviors. The ‘everyone’ behaviors apply to all people regardless of their role. The application of these behaviors will ensure that together we achieve alignment of policy, process and actions, which we regard as key to realizing our target of zero harm.

THEME		MANAGERS	SUPERVISORS	EVERYONE
Risk Management	>	Confront Risk	Promote Risk Awareness	Be Mindful
Standards	>	Set High Standards	Ensure Compliance	Follow Rules
Communication	>	Communicate Openly	Encourage the team	Speak Up
Involvement	>	Stay Involved	Involve the Team	Get Involved



## Company Structure







Prestigious Clients

Prestigious Clients



## Building Construction Projects

S.No.	Description
1	Construction of Bridges at Badin District Sindh
2	Construction Ground + 4 stories 06 Nos. buildings of Housing Complex at Mid Country Refinery PARCO Mehmood Kot District Muzaffargarh
3	Construction of New Excise and Shipping Building at Mid Country Refinery PARCO Mehmood Kot District Muzaffargarh
4	Construction of Road at Mid Country Refinery PARCO Mehmood Kot District Muzaffargarh
5	Construction of Hydro Jetting Facility at Mid Country Refinery PARCO Mehmood Kot District Muzaffargarh
6	Construction of Marubeni corporation Japanese Camp at Mid Country Refinery PARCO Mehmood Kot District Muzaffargarh
7	Construction of Access Road for Sewage Plant at Mid Country Refinery PARCO Mehmood Kot District Muzaffargarh
8	Renovation & Modification work at Housing Complex of Mid Country Refinery PARCO Mehmood Kot District Muzaffargarh
9	Modification in Old Excise and Shipping Building at Mid Country Refinery PARCO Mehmood Kot District Muzaffargarh
10	Repair / Carpeting of Road at Korangi PS-1 Karachi
11	Construction / Modification of MPT Hostel at TS-3 Faisalabad
12	Extension of N & MPT Hostel at TS-3 Faisalabad
13	Construction of Approach Road for Sulphur Yard at Mid Country Refinery PARCO Mehmood Kot District Muzaffargarh
14	Repair / Maintenance of Building at PS-4 Fazalpur
15	Construction of Office Building at PS-3 Shikarpur
16	Construction of Canteen Building & Admin Storage Block at Mid Country Refinery PARCO Mehmood Kot District Muzaffargarh
17	Installation of Rain Water guns at Plant Area at Mid Country Refinery PARCO Mehmood Kot District Muzaffargarh
18	Construction of GMC Type A at Quad Gar – Re-appropriation a fund Pre-list FY 2010-11 to 2014-15 Phase II, D.G Khan
19	Construction of 8* Sldrs Flats (G+3) Block No. 1 Qureshi Line-HQ 8 DIV at Sialkot
20	Construction of 8* Sldrs Flats (G+3) Block No. 2 Ghufan Shah Line-HQ 15 DIV at Sialkot
21	Construction of Gabion Walls and Stone Continental Hotel Mirpur (AJK)



## Civil Major Projects

S.No.	Description
1	Civil Works at In Out Arrangement of 500 kv Guddu -Mulatan 3rd Circuit at Rahim Yar Khan 500 kv Substation
2	Civil Works for Lott-III Section-II 220KV STD Twin Bundle Transmission Line From T- Point to UCH
3	Civil work for 220kv FWP01-2 New Port Qasim GS to Power Plant Transmission Line.
4	Civil work for 220kv FWP01-1 New Port Qasim to KDA Transmission Line.
5	Civil Work of 500Kv D/C Quaid bundle Transmission Line from HUBCO Power Plant to Existing 500kv Jamshoro Grid Station
6	Civil Works for Construction of General Medical Complex at Type A at Quad Garison – DG Khan.
7	Civil Works for Shalamar Grid Station Lahore
8	Contract No. ADB-301AR-2021 Complete civil works of 500/220/132 kV Lahore North Substation and Extension Work at 500/220/132 kV Nokhar Substation
9	Civil Works for 220kv Overhead & Underground T/L for 220kv Dhabeji Grid Station.
10	Civil Works for 132kv Overhead & Underground T/L From K-Electric 220/132kv Baldia GIS Station To 132 Kv Gantry of K2/K3 Grid Station (KANUPP).



## *Rehabilitation Work Projects*

S.No.	Description
1	Finishing Works of Khanpur Creek hotel, Khanpur, District Haripur
2	Finishing Works of Alina Shopping Mall, Gujrat
3	Finishing of Alina Shopping Mall and Hotel, Gujranwala
4	Construction & Finishing Work of G + 4 (Total 06 Nos.) buildings of Housing Complex at Mid Country Refinery PARCO Mehmood Kot District Muzaffargarh
5	Construction & Finishing of Multi Story Building (G+8), Army Housing Rawalpindi
6	Remodeling and Maintenance Works of Askari Club Rawalpindi
7	Rehabilitation Work for Projects TP -1000-02 / FWP -15



## Grid Station ETC Projects

S.No.	Description
1	132 / 220 kV GIS Shalimar Grid Station Lahore
2	132 kV WANA Substation at South Waziristan (FWO)
3	132 kV Grid Station Agha Steel Tubing Works at Port Qasim
4	132 kV Sukkur City Grid Station (HESCO-10)
5	132 kV Talhar Grid Station (HESCO-08)
6	132 kV Jacobabad Grid Station (HESCO-10)
7	132 kV Jail Road Larkana Grid Station (HESCO-10)
8	132 / 220 kV Grid Station Dera Murad Jamali (NTDC)
9	132 kV Grid Station Tando Ghulam Ali (HESCO-02)
10	132kV AIS Grid Station Choti & Sanjarpur Sadiqabad a/w Transmission Line



## Electrical Major Projects

S.No.	Description
1	500kV Double Circuit Quad Bundle Transmission Line from Suki Kinari Hydro Power Station to Interconnection Point of Existing Neelum Jhelum 500kV Double Circuit Quad Bundle Transmission Line (approx. 75km), using ACSR "Bunting" Conductor. (NTDC)
2	UNDERGROUND ELECTRIFICATION WORKS FOR HT/LT SYSTEM DHA PESHAWAR
3	132kv Double Circuit Transmission Line (Overhead Underground) From K-Electric 220/132kv Baldia GIS Station To 132 Kv Gantry of K2/K3 Grid Station (KANUPP)
4	Survey, Design, Engineering, Manufacture, Supply, Construction, Installation, Erection, Testing, Commissioning, Energization and Handing over on Turnkey basis of 220kv Overhead & Underground T/L for 220kv Dhabeji Grid Station.
5	In Out Arrangement of 500kV Guddu -Multan 3rd Circuit at Rahim Yar Khan 500kV Substation - NTDC
6	Thar-Mityari Tower Erection 500kV Transmission Line - NEIE
7	Civil Works, Erection, Stringing, Testing & Commissioning of 500kV D/C Quad Bundle T/ Line from HUBCO Power Plant to Existing 500kV Jamshoro GIS - NTDC
8	Construction of Foundation, Erection of Stringing 220kV Transmission Line Mahaneshra to Ali Khawar to Khan Khawar (Besham) to Dubair Khawar (Pattan) with NESPAK supervision NTDC Works
9	Construction of Foundation, Erection of Towers 220kV Transmission Line Bahawalpur to Muzaffargarh with NESPAK supervision NTDC Works
10	Construction of Foundation, Erection of Stringing 132kV Transmission Line in FFBL K-Electric Works at Karachi
11	Construction of Foundation, Erection of Towers 220kV Transmission Line Luddywala Sargodha to Faisalabad with NESPAK supervision NTDC Works
12	220kV Transmission Line from Qubo Saeed Khan to Khuzdar NTDC
13	132kV Transmission Line Hybrid Project (04 Lines) K-Electric Work Karachi
14	Design, Manufacture, Supply, Erection, Testing and Commissioning of 132kV Double Circuit Overhead Transmission Line between KTPS to Qayyumabad K-Electric Work Karachi
15	220kV Single Circuit Overhead Transmission line for Baldia Maripur K-Electric Work Karachi
16	Installation, Testing & commissioning of underground External Electrification in Block A & B at Master city Gujranwala
17	132KV Double Circuit Overhead T/L Looping In/Out K-1 Baldia Circuit to K-2 Design, Engineering, Survey, Supply, Installation, Erection, Testing, Commissioning and Energization on TURNKEY Basis
18	132kv Overhead T/L Looping IN/OUT Dhabeji-Gharo circuit for 132kV OurSun (35MW) Power Plant Installation, Erection, Testing, commissioning and Energization on Turnkey Basics
19	132kV Interconnection Scheme for Gharo Solar Plant Survey, Design, Engineering, Manufacture, Supply, Construction, Installation, Erection, Testing, Commissioning, Energization and Handing over on Turnkey basis
20	Construction of Spaira Ragha Canal Pump House at Kurram Tangi Multipurpose Dam Project Stage-1 and allied 11kV distribution line from power house-5 to pump house



## *Underground Cable Projects*

S.No.	Description
1	Laying of 220kV Underground Cable at KCR-Lalazar (TP-1000) FWP15-3 (K.Electric)
2	Laying of 11kV Underground Cable & Allied Civil & Electrical Works at DHA Lahore
3	Supply & Construction of Civil Works (including all survey works), Erection / Installation, Testing and Commissioning for Underground External Electrification and Street Light System of Sector (Extension-I & II) DHA Phase VI Lahore
4	220kV2500 sq. mm. XLPE Power Cable D/C twin cable per phase Underground Transmission Line for Dhabeji G.S
5	132kV 800 sq. mm. XLPE Power Cable D/C Underground Transmission Line for K2K3 Power Plant
6	220kV2500 sq. mm. XLPE Power Cable D/C twin cable per phase Underground Transmission Line from PLDP to Lalazar G.S
7	220kV2500 sq. mm. XLPE Power Cable D/C twin cable per phase Underground Transmission Line from PLDP to KCR G.S
8	ETC work for 132kV Sukkur Substation
9	ETC work for 132kV Jacobabad Substation
10	ETC work for 132kV Larkana Substation
11	Feasibility report of 220kV D/C Underground T/L for KDA-Gulshan
12	Feasibility report of 132kV Single Circuit Underground T/L for Civic Center-Liaquatabad
13	Feasibility report of 132kV Single Circuit Underground T/L for Azizabad Abad-Liaquatabad
14	Feasibility report of 132kV Single Circuit Underground T/L for Gulshan-Azizabad
15	Installation, Testing & Commissioning of Underground External Electrification in Block A & B at Master City Gujranwala.
16	Rehabilitation of 11kV Overhead / Underground Transmission Line at Baba Bhit Island K-Electric Work Karachi
17	Excavation & Laying Work of 300 sqmm HT/UG Cable at Hub Chowki S/D.I. Mengalabad RMU (K-Electric)
18	Excavation & Laying Work of 300 sqmm HT/UG Cable at Federal B Grid (K-Electric)
19	Excavation & Laying Work of 300 sqmm HT/UG Cable at GM Steel S/S to Bilal-e-Rahim PMT (K-Electric)
20	Excavation & Laying Work of 300 sqmm HT/UG Cable at Gulberg Block 18 (K-Electric)
21	Excavation & Laying Work of 300 sqmm HT/UG Cable at Lyari Gen S/S to BBSU Chawki Wala Campus PMT (K-Electric)
22	Excavation & Laying Work of 300 sqmm HT/UG Cable at A-149 PMT to P-10 Masha Allah Pakwan PMT (K-Electric)



## Underground Cable Projects

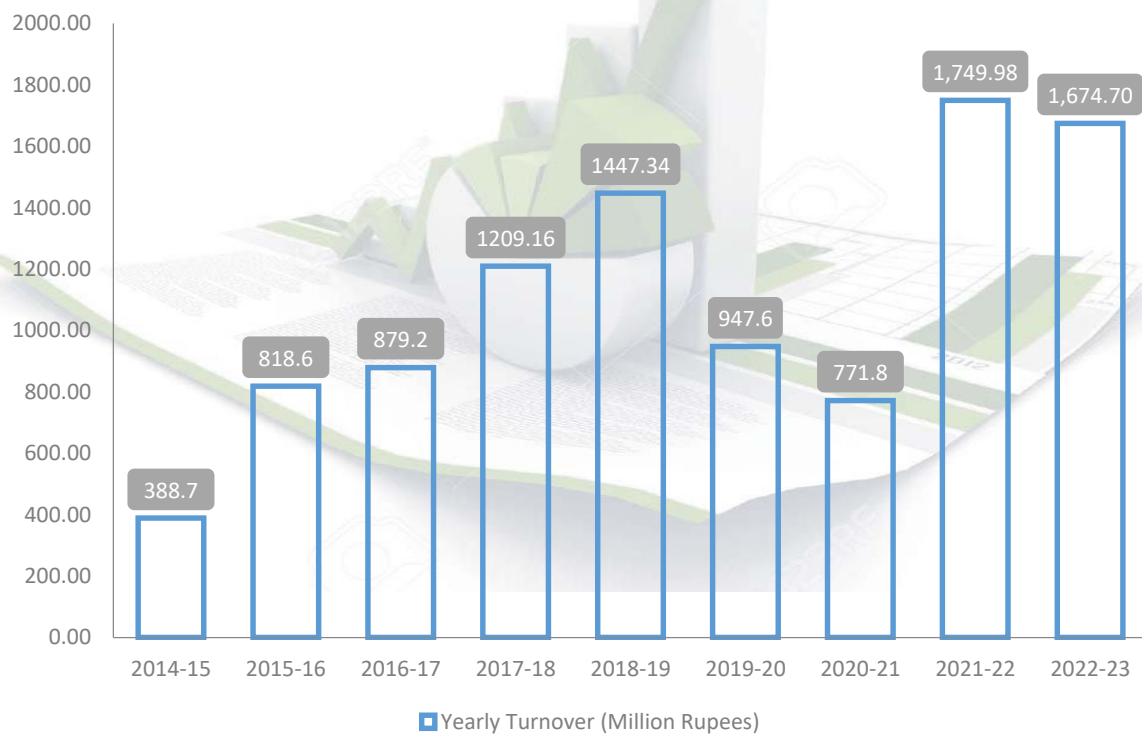
S.No.	Description
23	Excavation & Laying Work of 300 sqmm HT/UG Cable at Ideal Industry S/D F.B Grid (K-Electric)
24	Excavation & Laying Work of 300 sqmm HT/UG Cable at North Nazimabad State Bank S/S to P-1, State Bank S/S to P9/1 (K-Electric)
25	Excavation & Laying Work of 300 sqmm HT/UG Cable at Firdous Sehar PMT to H.G O/H Pole 36/1 Faqeer Colony (K-Electric)
26	Excavation & Laying Work of 300 sqmm HT/UG Cable at Naya Nazimabad Cable Shifting Work Manghopeer Road (K-Electric)



## Financial Strength

CPM has enough financial strength to complete the corresponding project. As per banking rating, CPM has a very good credit rating. On a credit rating report, CPM has been marked as a “Growing Company”.

## Yearly Turnover





## Survey Equipment



Theodolite



Transit Level



GPS RTK



Total Station



## Civil Works Equipment



Rig Machine for Pilling



Block Molding Machine



Batching Point



De-Watering / Boring Sets



Dumpers



Excavator



Mixer Machine



Plate Compactor



Centrifugal Pumps



Vibrator with Leads



Lift Machine with Tower 150 Ft



Metallic Formwork



## Grid Station ETC Works Equipment

S.No.	Description
1	Steel Rope for Wench
2	Two Way Pulley Block
3	Single Way Pulley Block
4	Chain Block 3 Ton
5	Nylon Rope
6	Press Machine 100 Ton with Dies
7	Cable Jointing Tools
8	Cable Thimble Pressing Tool Kit
9	Cable Pulling Tool
10	Reel Carrier
11	Conductor Grips
12	D-Shackle
13	Earth Resistance Meter
14	Continuity Meter
15	Earth Mugger
16	Transformer Dehydration and ETC Machine
17	Cable I.D Printing Machine





## Erection Equipment

S.No.	Description
1	Aluminum Derick Pole (96')
2	Light Winch Machine
3	Steel Anchor
4	Pulley Block
5	Torque Winch
6	Tightening Tools
7	Crane (25 Ton)
8	Crow Bars & Hammers
9	Steel Rope (12mm & 14mm)
10	Nylon Rope
11	Steel Shillings of Different Size
12	D-Shackle of Different Size
13	Wooden Planks





## Stringing Equipment (Single, Double & Quad Bundle)



Quad Conductor Tensioner



Quad Conductor Puller



Crane Mounted Truck



Conductor Traveler



Pilot Line



Grips for Conductor & Shield Wire



Puller Machine



Press Machine 100 Ton along with Jack & Dies



Single Way Pulley



Three Way Pulley



Two Way Traveler



Reel Carrier



## Stringing Equipment (Single, Double & Quad Bundle)



Fork lifter (03 Ton)



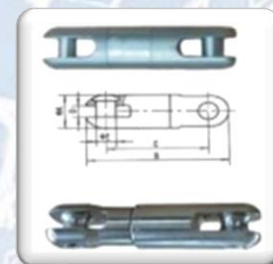
Steel Rope 12mm & 14mm for  
Winching



Chain Block 03 Ton & 06 Ton 09



Earthing Set Device



Rotary Joint



Level, Theodolite with Stand for  
Sag



Stacking Joint



Tractor Trolley



D-Shackle



Running Board/



Cable Car



Crane (10 Ton)



## Under Ground Cable Works Equipment



Dual Puller Machine



Swivel Joint & Steel Rope



Dual Bull Wheel Winch



Cable Rollers



Cable Corner Rollers



Hold On rollers



Mesh Sock Joints



Cable Feeder



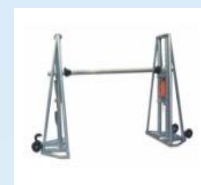
GPS & Measuring Wheel



Hydraulic Cable Cutter



Cable Puller Tractor



Hydraulic Cable Reel stand



## Under Ground Cable Works Equipment



Manual hydraulic pliers



Hot air gun



Hygrometer



hydraulic pump



Hydraulic Pressure Crimper



Test Equipments



Molds



DC Hipot Tester



Lever hoist



Cable insulation Peeling knife



Spray gun



heating belt



temperature control box



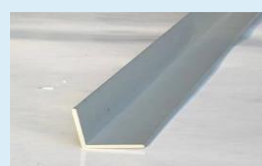
Insulation grinding machine



thermometer electronic



Reciprocating saws



angle aluminum profile



Cable bending machine

## List of Equipments (T&P)



## Underground Equipment

S.No.	Description	S.No.	Description
1	Cable Pulling Winch	10	Pilot Wire / Ropes
2	Cable Feeder	11	Conductor Grips
3	Anti-twisting Braided Steel Rope	12	Chain Block
4	Cable Reel Stand	13	Press Machine
5	Cable Sock Joints	14	Cable Jointing Tools
6	Cable Ground Roller	15	Reel Carrier
7	Corner Ground Roller Assembly	16	D-Shackle
8	Route Measuring Meter	17	Earth Resistance Meter
9	Cable Jacks	18	Cable ID Printing Machine







ISO 9001-2015



ISO 14001-2015



ISO 45001-2018



Safety Award Achieved  
From K-Electric



Safety Award Achieved  
From Mid Country  
Refinery



The background of the entire page is a blue-tinted photograph of several high-voltage electrical transmission towers and power lines stretching across the sky. The towers are steel lattice structures, and the lines are thin and diagonal, creating a sense of depth and scale.

## Contact

---

**Registered:** Plot No. RS-12, Street No. 03, Sector No. 31-C/1, Korangi, Industrial Area, Karachi.

**Phone:** 021-35158691-94

**Fax:** 021-35158694

**Email:** eo@cpmorg.com

**Lahore Office:** House No. 759, Block F-2, Johar Town Lahore.

**Phone:** 042-35967610

**Fax:** 042-35967665

**Rawalpindi Office:** House No. 68 C, Street 47A, Sector-F, DHA Phase-I, Rawalpindi.

**Phone:** 051-5154600

**Fax:** 051-5154600